

# United Kingdom: England

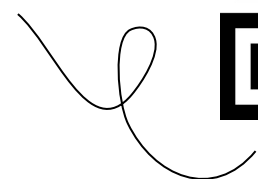


Choosing a host in England

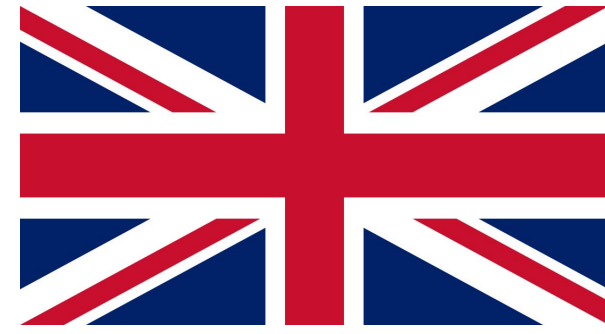


Nydia Dominguez  
Study Abroad Advisor

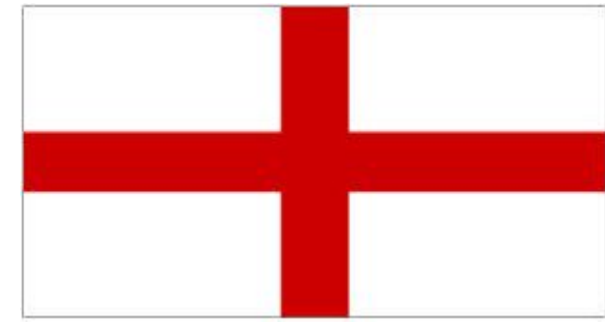
*Scan me for getting started info*



United Kingdom  
(NI official flag)



England



Scotland



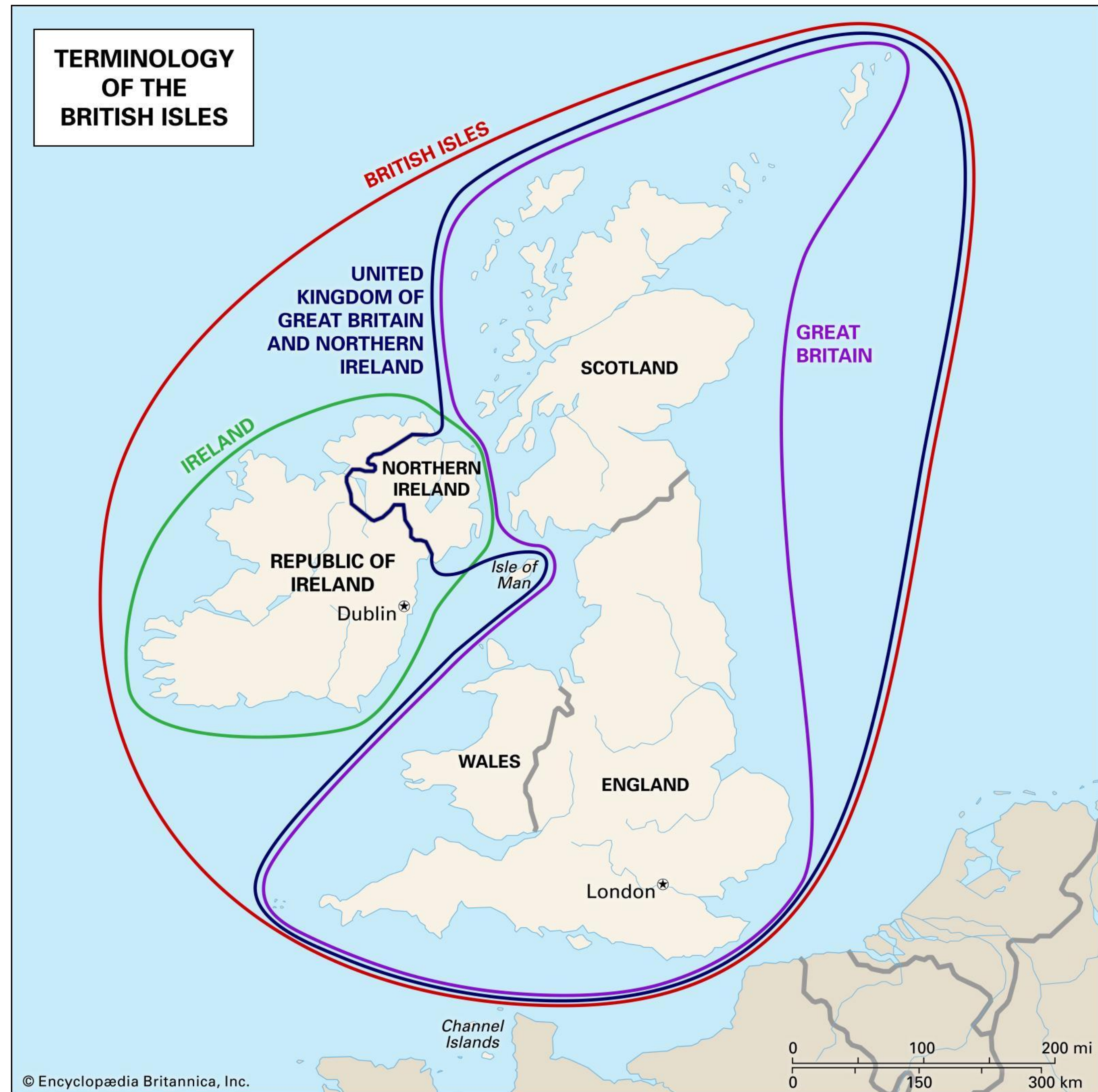
Wales



Republic of  
Ireland



### TERMINOLOGY OF THE BRITISH ISLES



© Encyclopædia Britannica, Inc.

# STUDYING IN ENGLAND

## ENGLAND

- **University of Manchester**
- **University of Bristol**
- **University of East Anglia**
- **University of Kent**
- **University of Sussex**

## LONDON

- **King's College London**
- **University College London**
- **Imperial College London**
- **Queen Mary, University of London**
- **Royal Holloway, University of London**



# STUDYING IN LONDON

- “University of London” is the institution that accredits London institutions – Imperial is independent
- King’s College + University College do not have campuses – commute to class (30 – 60 minutes (KCL) 20 – 60 (UCL))
- It takes 35 minutes by train to get from Royal Holloway to Central London



# KING'S COLLEGE LONDON

- Most popular host in England
- Academically prestigious
- Course availability across STEM, Humanities, Social Sciences & Liberal Arts
- Often oversubscribed
- Central London location
- City campus (students will commute to class)



# KING'S COLLEGE LONDON

- Psychology students (year long only)
- Comp Sci (Informatics) – limited to maximum of 2 classes per semester
- Course availability can vary year by year
- Student's with strict requirements should potentially consider an alternative host
- Students should apply with a second choice institution (that's not UCL!) in mind



# UNIVERSITY COLLEGE LONDON

- Top 10 global institution (no.8)
- Largest University in England
- Specialises in STEM and Social Science
- Prestigious humanities departments (classics, history)
- Central London location
- City campus (students will commute to class)



- No psychology
- No Neuroscience / No cognitive science
- Economics & Political Science extremely competitive

# UNIVERSITY COLLEGE LONDON

- Anthropology
- **Archaeology**
- BAsc (Arts and Sciences, similar to Liberal Arts)
- **Biology**
- **Chemistry**
- Chemical Engineering
- Civil Engineering
- Earth Sciences
- **Economics**
- Geography
- History
- Institute of the Americas
- Linguistics
- Management
- Mechanical Engineering
- Natural Sciences
- **Political Science**
- Physics and Astronomy
- Statistics





# IMPERIAL COLLEGE LONDON



- One of the world's best STEM universities
- Year long only study in the following subjects >
- Ranked 9th in the world
- Challenging academic programme

- Aeronautics
- Bioengineering
- Electrical Engineering
- Earth Sciences
- Chemical Engineering
- Civil & Environmental Engineering
- Mechanical Engineering
- Computer Science

# QUEEN MARY



- **Only partner with a central London campus**
- **All accommodation on campus**
- **Located in 'Mile End' (Zone 2), on the Central line, >15 minutes from the west end**
- **Broad course offering, something for everyone**

# Royal Holloway, University of London

- Founded in 1879
- Beautiful self-contained campus, built around 'Founders Hall' (pictured)
- Famous for performing arts, but offers a wide range of courses across STEM and the humanities
- Next to the towns of Windsor and Eton



# Royal Holloway

- Vibrant student culture, excellent sports and other extra curricular clubs and societies
- Lots of courses available, most students can find something suitable for their programme



# There is a world outside of London



# Manchester

- 163 miles (262km) from London
- Located in 'The North'
- 5th largest city (553,230)
- 2 hours by train from London (£44.50 same day)
- Trains run every 20 minutes from Euston



# University of Manchester

- Located in the heart of Manchester
- Internationally famous for its medical, biology and chemistry programmes
- Currently ranked 6<sup>th</sup> best institution in the UK, 26<sup>th</sup> Globally
- Second largest University in the UK
- Birthplace of nuclear physics, where Ernest Rutherford first split the atom



# University of Manchester

- Manchester is the most popular destination for Brits leaving London
- Vibrant culture and nightlife, with some of the best places to eat in the country



- Wide range of courses open to students across all disciplines
- Some of the accommodations still require students wear formal robes for meals





# Bristol

1. 107 miles (172km) from London
2. 1 hour 30 minutes from London by train
3. Trains every 15 minutes from Paddington (£30 same day)
4. Capital of West England
5. Next to the city of Bath (spa)
6. Young population (467,099)



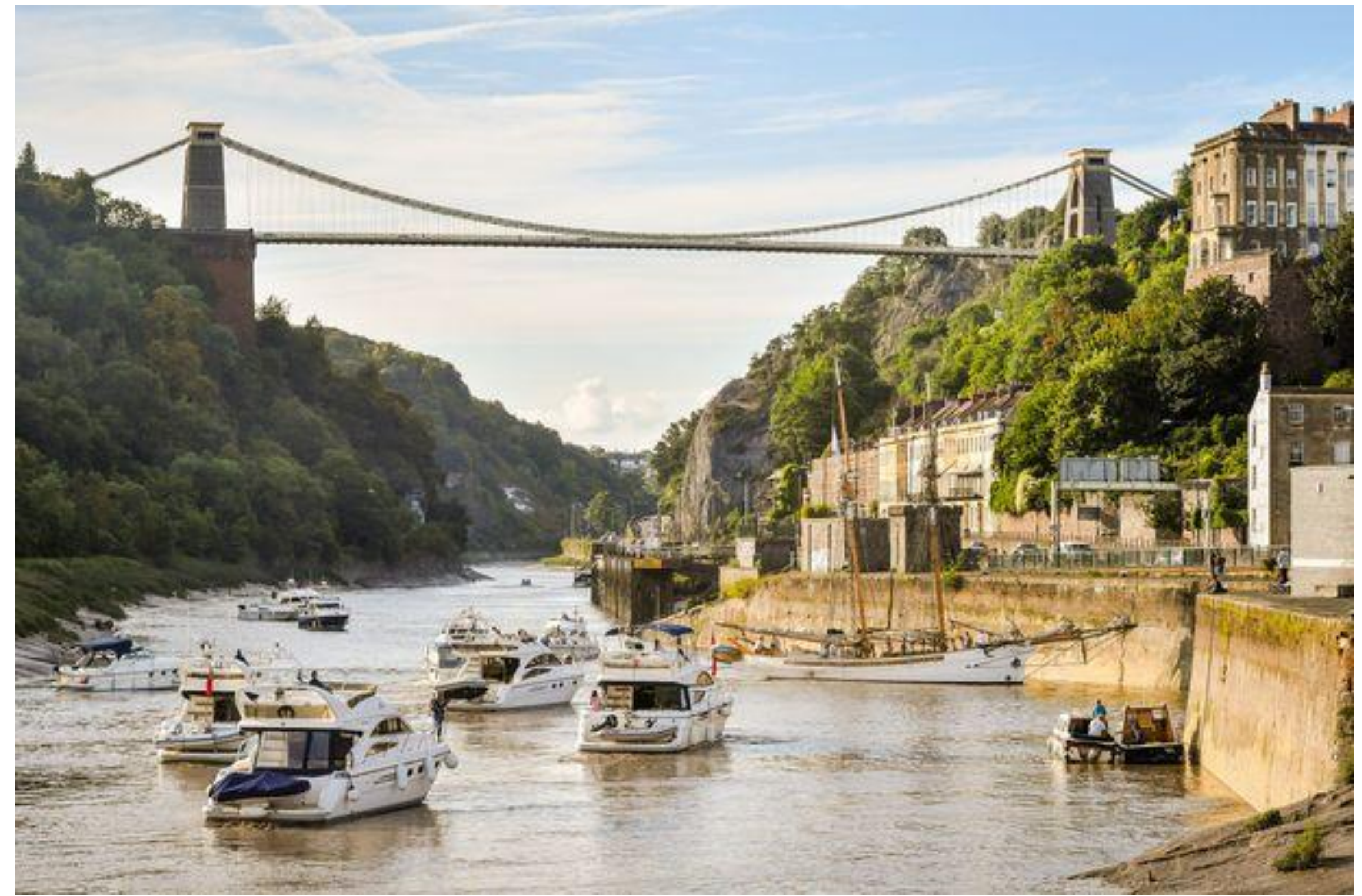
# University of Bristol

- Founded in 1876
- Top 10 UK university
- Boasts best courses in the UK across disciplines
- Wide choice of modules open to students
- Winston Churchill was chancellor
- Famous for its competitive sporting prowess



# Bristol

- Widely accepted as the best student city in the UK
- Largest city in South-West England
- One of the youngest populations in the UK
- Home to the famous, Bristol Old Vic theatre



- One of the most visited cities in the UK, was the heart of British ship building in the Victoria period
- UK's greenest city
- Liberal and LGBTQ+ friendly culture

# Canterbury, Kent

- 54 miles (87 km) from London
- Commuter town 54 minutes by train from London (28.70 same day)
- Safest student town in England
- Very small city (43,432 – over 50% students)
- One of the oldest continuous settlements in Britain



# University of Kent

- Leading 'Plate Glass University'
- Campus built on hill overlooking Canterbury
- Leading Law programme, strong humanities offerings
- Widest range of module availability of any partner
- Thriving social scene



# Canterbury

- The Ancient Cathedral City is UNESCO world heritage site
- Safest student city in the UK
- Original Roman town built in 1AD
- Oldest part of Cathedral (Norman Crypt), was built in 1070



# Canterbury

- Tourist driven economy, with great food and arts
- Comparatively small, so easier to acclimate
- Short Bus ride to the seaside!



# Norwich

- In 'East Anglia'
- 98 miles (158 km) from London
- 1 hour 50 minutes by train (£56 same day)
- One of the larger cathedral cities (197,212)





# University of East Anglia



- Environment and Sustainability
- Situated on England's east coast, in the city of Norwich
- Offers courses in nearly all subject areas
- Famous for 'Brutalist' architecture of campus
- Beautiful part of the English countryside

# Norwich

- Situated in the English countryside, near some of the most beautiful coastline in the country
- “The CEO of Vietnam Airlines has described the Norfolk city as being on a par with an Indonesian island.” – The Guardian, 2019



# University of Sussex, Brighton

- 47 miles (75km) from London
- Commuter town
- 1 hour from London by train (£19 same day)
- Campus is in the popular seaside town of Brighton
- Population of Brighton (229,700)



# University of Sussex

- U.S style quad campus
- Located near to Brighton (by the beach)
- Highly ranked social sciences, international relations, comms and media courses
- Wide subject area offerings, one of the few places to take law modules



# Sussex / Brighton & Hove

- Famous student town
- Famous LGBTQ+ scene
- Known for live music, arts and the beach!
- 8 minute train ride from campus
- One of the most visited places in the UK



# Other Programs

- ❖ London's Calling (UC London Study Center)
- ❖ Business & Entrepreneurship in London (UC London Study Center)
- ❖ Sotheby's Institute of Art, London

# Things to think about...

- Accommodation and pricing!
- Travel fees, you can't walk to class in London



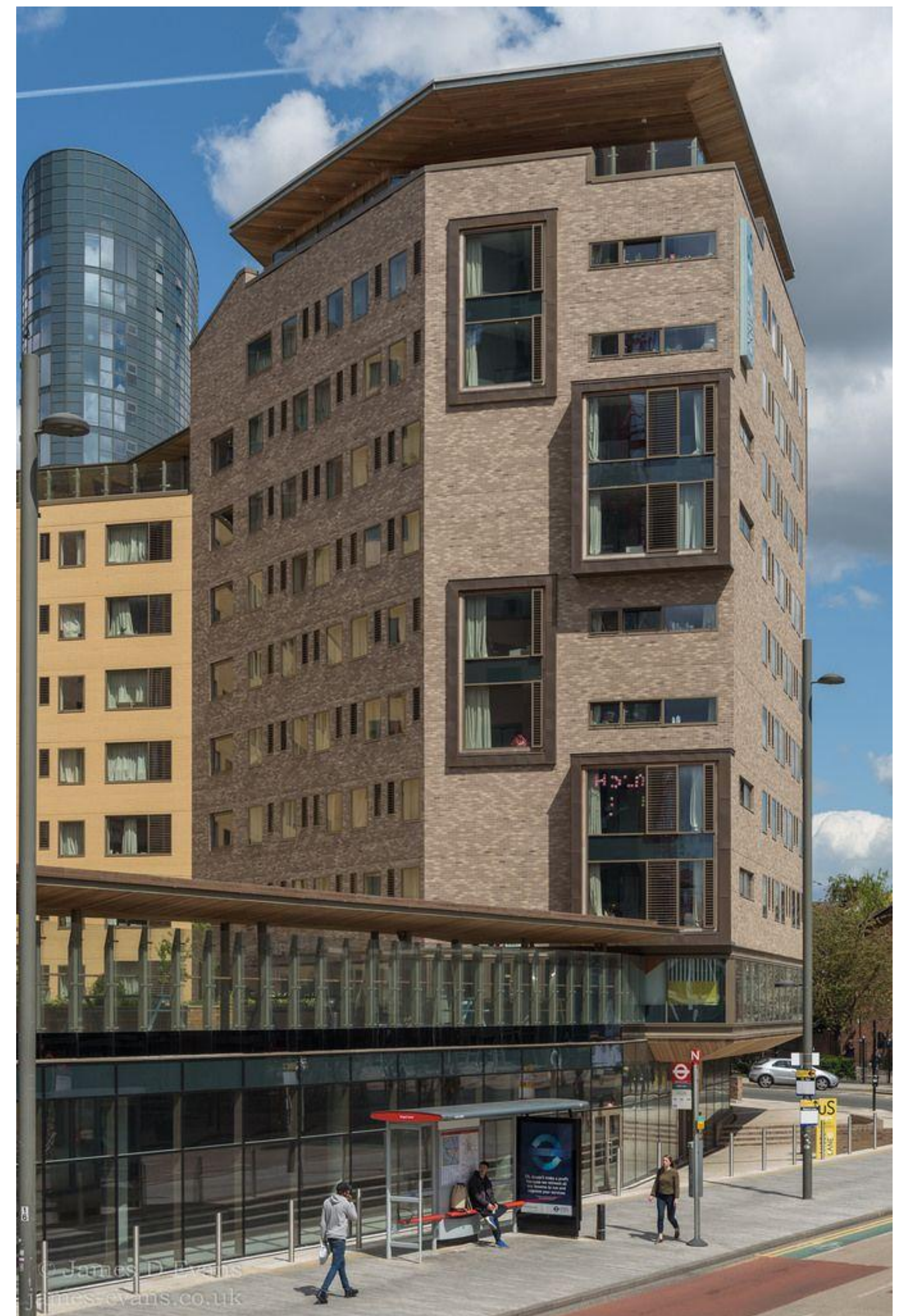
- Cost of food, entertainment etc.
- \*Testimonial for studying outside London - CW

# Accommodation

Average Accommodation (single room)

\*\*\*GUIDELINE ONLY

- King's College London: (£800) (\$1068) PM (excluding meals)
- Royal Holloway (£500) (\$667) PM (including meals)
- University of Manchester (£400 – £600) (\$534 – \$800)
- UEA (£480 – £700) (\$640 – \$935)
- University of Kent (£400 – £650) (\$534 – \$850)





# Travel & Living Costs

## Travel

- **KCL& UCL: Monthly travelcard >£100 (with student discount)**
- **Manchester: Free student bus service, or 1.50 per journey**
- **Other partners: walk to class**

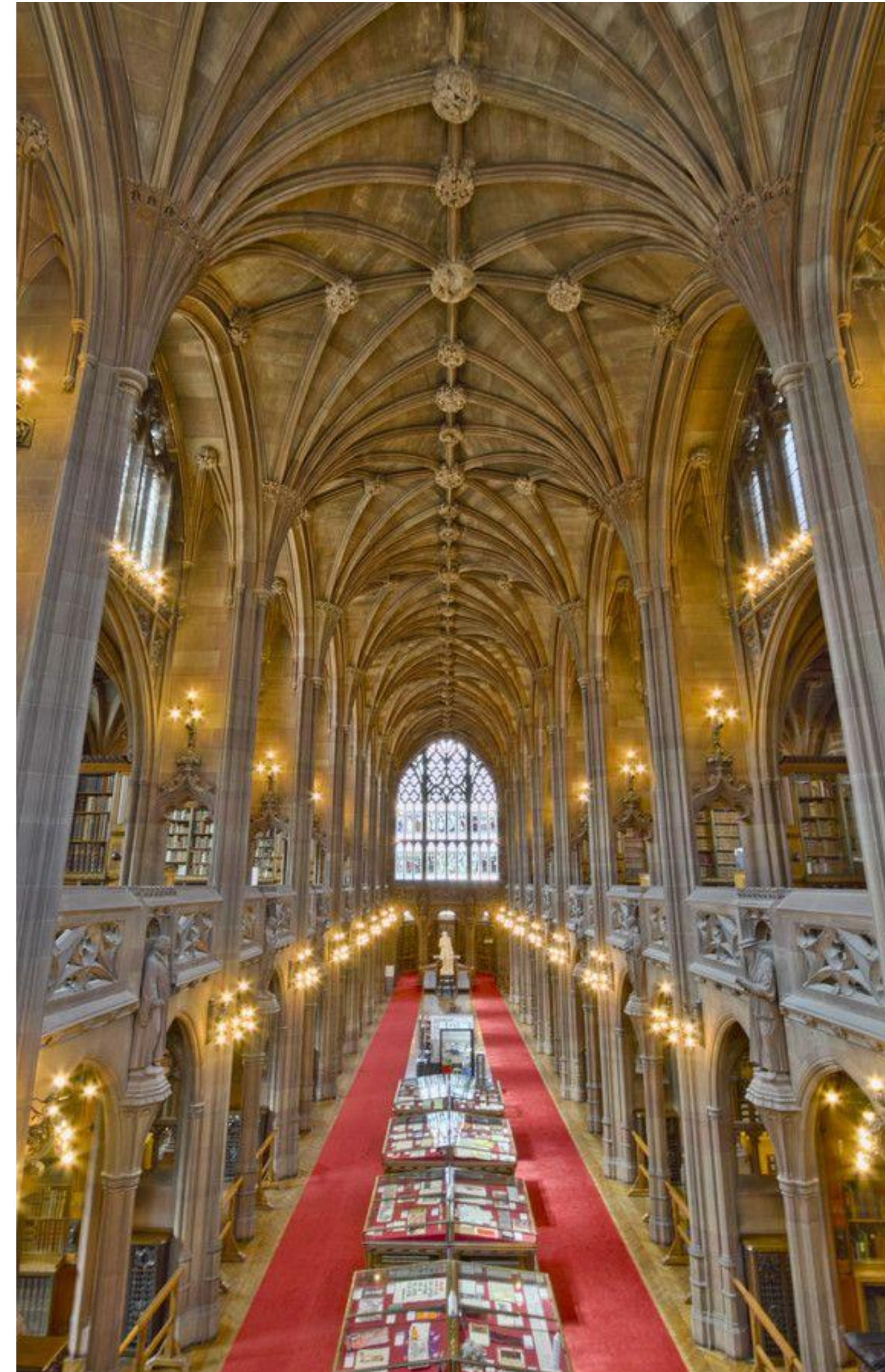


## Living Costs

- **London Premium: essential food and drink affordable everywhere, but any kind of social activity is going to be expensive.**

# Do your Research!

- **Do not go with your first instinct or gut choice, research the partners**
- **Think about your goals and motivations**
- **Think realistically about the kind of environment you thrive in.**
- **Moving 5000 miles is challenging enough, don't feel forced to move to a big city**
- **Even though there isn't a language barrier, England will be just as a much of a cultural shock**



# Application Process

## Step 1

Start an application on the UCEAP and TritonsAbroad portals and select program

## Step 2

Work on Academic Planning Form from TritonsAbroad application portal

## Step 3

Submit application on both portals by/before deadline

## Step 4

Be on the lookout for emails from our office and UCEAP



*Scan me to see  
UCEAP steps to  
apply handout*



# QUESTIONS?

Use chat or unmute and ask questions